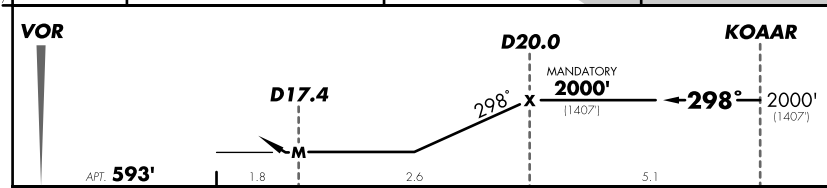
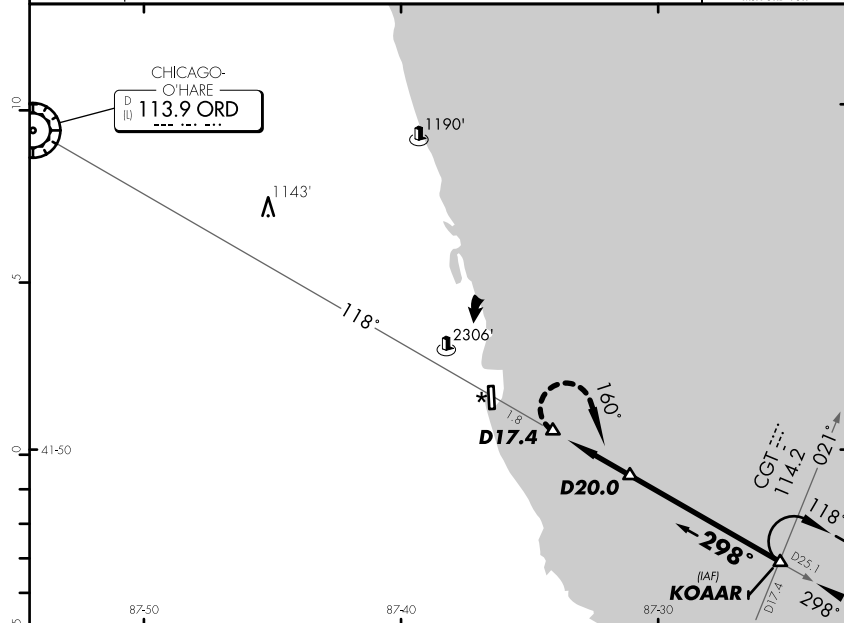


KCGX
MEIGS

73-1

CHICAGO ILL
VOR DME-A

*ATIS 127.35		CHICAGO Approach (R) 118.4		*MEIGS Tower CTAF 121.3		*Ground 121.8	
VOR ORD 113.9	Final Apch Crs 298°	Mandatory Alt D20.0 2000' (1407')	MDA(H) Refer to minimums	Apt Elev 593'	3400'		
MISSED APCH: Climbing RIGHT turn to 2000' via heading 160° and ORD VOR R-118 to KOAAR INT and hpld.							
1. RADAR required. 2. Procedure not authorized when Control Tower closed.							MSA ORD VOR



Lighting Refer to Airport Chart		2000'	160° via 1 hdg	ORD and 113.9 R-118	KOAAR
MAP at D17.4					

CIRCLE-TO-LAND		Not Authorized West of Rwy 18-36 Not Authorized at Night to Rwy 18	
	MAX Kts	MSA(H)	
A	90	1180' (587') -2 1/4	
B	120		
C	140		
D		NA	

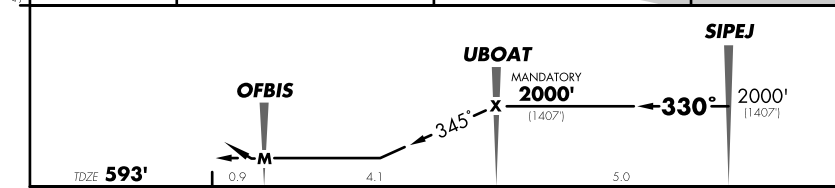
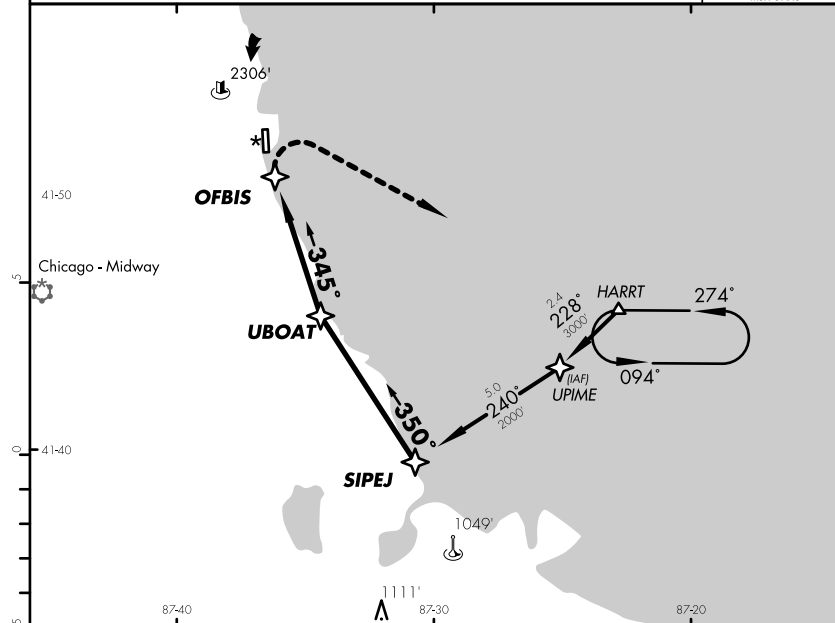
XPlane Japan

KCGX
MEIGS

78-1

CHICAGO ILL
GPS Rwy 36

*ATIS 127.35		CHICAGO Approach (R) 118.4		*MEIGS Tower CTAF 121.3		*Ground 121.8	
GPS	Final Apch Crs 345°	Mandatory Alt UBOAT 2000' (1407')	MDA(H) Refer to minimums	Apt Elev 593' TDZE 593'	3400'		
MISSED APCH: Climbing RIGHT turn to 2000' direct HARRT and hpld.							
Procedure not authorized when Control Tower closed.							MSA OFBIS



Lighting Refer to Airport Chart		2000'	345° via 1 hdg	UBOAT and 118.4 R-118	KOAAR
MAP at OFBIS					

STRAIGHT-IN LANDING RWY 36		CIRCLE-TO-LAND	
MDA(H) 1220' (627')		Not Authorized West of Rwy 18-36 Not Authorized at Night to Rwy 18	
	MAX Kts	MSA(H)	
A	90	1220' (627') -1 1/4	
B	120		
C	140		
D		NA	

XPlane Japan

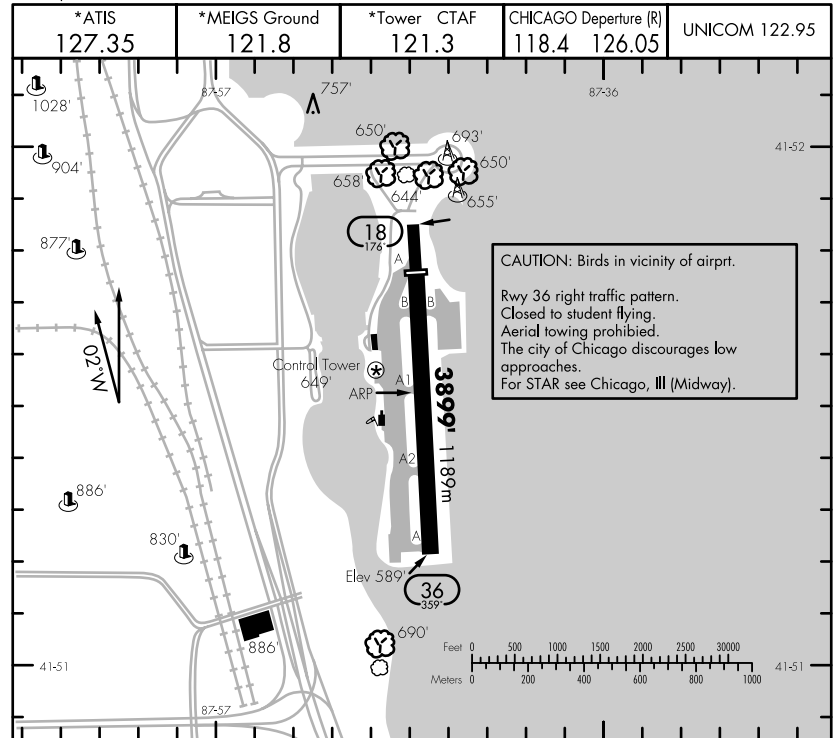
KCGX

Apt Elev 593'
118.1°/15.4 From ORD 113.9

CHICAGO ILL

MEIGS
N41 51.5 W087 36.5

APT



INTENTIONALLY

LEFT

BLANK

ADDITIONAL RUNWAY INFORMATION

RWY				USABLE LENGTHS		TAKE - OFF	WIDTH
	HIRL	REIL	Other	Threshold	Glide Slope		
18	HIRL	REIL	groved	3350'	1021m		1 150' 45m
36	HIRL	REIL VASI - L	groved				

1 First 549' (167m) rwy 18 100' (30m) wide.

TAKE - OFF & IFR DEPARTURE PROCEDURE

RWY 18			Other	RWY 36		FOR FILING AS ALTERNATE	
With Min climb of 240'/NM to 3000'		STD		300 - 1	1500 - 2	A	NA
Adequate Vis Ref	1		1/2				
1 & 2 Eng	1/4	1	300 - 1	1500 - 2	B	NA	
3 & 4 Eng		1/2			C		

IFR DEPARTURE PROCEDURE: Comply with radar vectors of
Rwy 18: climb to 3000' direct CGT VOR. Rwy 36: climbing right turn to 3000' heading 140° to intercept the CGT VOR
R - 011, then via CGT VOR R - 011 to CGT VOR.

